



PROJECT:

Lemoore Police Department Dispatch Building
Modular Bid Package
658 Hill St.
Lemoore, CA 93245

Date : 02/15/19
TETER Project No.: A 17-10678 D

CLIENT:

City of Lemoore
119 Fox St.
Lemoore, CA 93245

The following additions, deletions and revisions to the plans, specifications and Addenda shall become a part of the plans and specifications. It is the responsibility of the General Contractor to submit the information contained in this addendum to all subcontractors and suppliers. The Bidder shall acknowledge receipt of the Addendum in the Bid Proposal. (Addendum number of pages: 4 pages + 4 attachments = 13 total pages).

PROJECT MANUAL:

2-01: PROJECT MANUAL, SPECIFICATION SECTION M_076200 – “SHEET METAL FLASHING AND TRIM” addition as follows:

A. Refer to 2.3, C, 3. Addition as follows:

“f. Protecto Wrap Company; Jiffy Seal Ice and Water Guard HT Roofing Underlayment.”

2-02: PROJECT MANUAL, SPECIFICATION SECTION M_096519 – “RESILIENT TILE FLOORING” revision as follows:

A. Add the attached Section, **M_096519 RESILIENT TILE FLOORING**, to the Table of Contents and Project Manual (6 pages).

2-03: PROJECT MANUAL, SPECIFICATION SECTION M_096519 – “COMPOSITE TILE FLOORING” revision as follows:

- A. Update the Table of Contents to reflect the following: Revise Section number **M_096519** to **M_096521 – “COMPOSITE TILE FLOORING.”**
- B. Refer to 2.2. Revision as follows:

“A. Basis of Design: Drawings and Specifications are based on the following:

1. Interface, Luxury Vinyl Tile.

- a. Subject to compliance with requirements, provide product indicated or submit Request for Substitution (subject to approval by Architect).*

B. Description:

- 1. Class/ASTM F1700, Class III Printed Vinyl Tile*
- 2. Wearing Layer: 22 mil.*
- 3. Thickness: 4.5 mm.*
- 4. Backing Class: Commercial*
- 5. Nominal Size: 50 cm X 50 cm (19.69 in x 19.69 in).*
- 6. NBS Smoke Density: ASTM E662 <450.*
- 7. Critical Radiant Flux: ASTM E 648, Class 1.*
- 8. Slip Resistance: ASTM D2047 >0.55 wet/dry Meets ADA Recommendations.*
- 9. Colors and Patterns: To be selected by Architect at a later date.*
- 10. Grouted Joints: No.”*

2-04: PROJECT MANUAL, SPECIFICATION SECTION M_087100 – “DOOR HARDWARE” addition as follows:

- A. Refer to 3.7, D. Addition as follows:

“HW SET 07:

Interior, Office

Each to have the following:

<i>3</i>	<i>Ea</i>	<i>Butt Hinge</i>	<i>BB1191 4.5 x 4.5</i>	<i>US10 HAG</i>
<i>1</i>	<i>Ea</i>	<i>Lockset</i>	<i>ND72PD, RHO</i>	<i>US10 SCH</i>
<i>1</i>	<i>Ea</i>	<i>Surface Closer</i>	<i>4111 (Parallel arm)</i>	<i>US10 LCN</i>
<i>1</i>	<i>Ea</i>	<i>Kick Plate</i>	<i>K0050 10" X 2" LDW</i>	<i>US10 TRI</i>
<i>1</i>	<i>Ea</i>	<i>Stop</i>	<i>FS436</i>	<i>US10 IVE”</i>

ADDENDUM NO. 2

Lemoore PD Dispatch – Modular Bid Package
Page 3

2-05: PROJECT MANUAL, SPECIFICATION SECTION M_111700 – “PASS THRU TRANSACTION WINDOW,” addition as follows:

- A. The following Transaction Window manufacturer is acceptable for the use on this project in addition to the specified manufacturer. Contractor to provide product information for verification that proposed products are equivalent to specified products.
 - i. Chicago Bullet Proof Systems.

2-06: PROJECT MANUAL, SPECIFICATION SECTION M_131600 – “PREFABRICATED MODULAR STRUCTURES,” addition as follows:

- A. Refer to Part 1. Addition as follows:

“1.7 AGENCY REVIEW

- A. The Modular Building Drawings shall be submitted to the Building Department for separate plan check review and approval.”*

DRAWINGS:

2-07: DRAWINGS, SHEET M-A200 – “FLOOR PLAN,” revise as follows:

- A. In reference to Detail 7/M-A200 – “FLOOR PLAN,” please make revisions per attached Detail “DOOR AT 104 - INTERVIEW” on AD2-A1. Revisions have been clouded. (1 page)

2-08: DRAWINGS, SHEET M-A200 – “FLOOR PLAN,” revise as follows:

- A. In reference to Detail 7/M-A200 – “FLOOR PLAN,” and Detail 16/M-A200 – “ENLARGED FLOOR PLAN – TOILET (102),” please make revisions per attached Detail “DOOR AT 102 - TOILET” on AD2-A2. Revisions have been clouded. (1 page)

2-09: DRAWINGS, SHEET M-A200 – “FLOOR PLAN,” revise as follows:

- A. In reference to Detail 7/M-A200 – “FLOOR PLAN,” and Detail 8/M-A200 – “ENLARGED FLOOR PLAN – RESTROOMS (113, 114, & 115), please make revisions per attached Detail “SHELF AT 113 – CHIEF’S R.R.” on AD2-A3. Revisions have been clouded. (1 page)

ADDENDUM NO. 2

Lemoore PD Dispatch – Modular Bid Package
Page 4

2-10: DRAWINGS, SHEET M-A700 – “SCHEDULES,” revise as follows:

A. In reference to Detail 3/M-A700 – “DOOR SCHEDULE,” revise as follows:

1. For Door No. 101B, revise the Material from “HM” to “SC.”
2. For Door No. 104A, revise the Hardware Group from “4” to “7.” Refer to Item 2-04 of this Addendum.

2-11: DRAWINGS, SHEET M-A902 – “INTERIOR ELEVATIONS,” revise as follows:

- A. In reference to Detail 16/M-A902 – “113 – CHIEF’S RESTROOM,” please make revisions per attached Detail “SHELF AT 113 – CHIEF’S R.R.” on AD2-A3. Revisions have been clouded. (1 page)

CLARIFICATIONS:

2-12: Existing drawings are available on the FTP site.

END OF ADDENDUM NO. 2

SECTION 096519
RESILIENT TILE FLOORING

PART 1 - GENERAL

1.1 RELATED DOCUMENTS

- A. Drawings and general provisions of the Contract, including General and Supplementary Conditions and Division 01 Specification Sections, apply to this Section.

1.2 SUMMARY

- A. Section Includes:

- 1. Vinyl composition floor tile.

- B. Related Sections:

- 1. Division 03 Section "Cast-in-Place Concrete" for concrete floor substrates.
 - 2. Division 03 Section "Topical Concrete Vapor Control Barrier."
 - 3. Division 09 Section "Flooring Moisture and pH Testing."
 - 4. Division 09 Section "Resilient Base and Accessories" for resilient base, reducer strips, and other accessories installed with resilient floor coverings.

1.3 SUBMITTALS

- A. Product Data: For each type of product indicated, include the following:

- 1. Documentation of VOC content for adhesives and chemical-bonding compounds.
 - 2. Documentation indicating resilient flooring complies with the pollution emission limits of at least one of the following:
 - a. Resilient Floor Covering Institute (RFCI) FloorScore program.
 - b. VOC-emission limits and testing requirements specified in the California Department of Public Health's 2010 Standard Method for the Testing and Evaluation Chambers, Version 1.1, February 2010.
 - c. California Collaborative for High Performance Schools (CA-CHPS) Criteria Interpretation for EQ 2.2 dated July 2012 and listed in the CHPS High performance Product Database.
 - d. CDPH criteria as certified under the Greenguard Children's and Schools Program.

- B. Samples for Initial Selection: For each type of floor tile indicated.

- C. Maintenance Data: For each type of floor tile to include in maintenance manuals.

1.4 MAINTENANCE MATERIAL SUBMITTALS

- A. Furnish extra materials that match products installed and that are packaged with protective covering for storage and identified with labels describing contents.
 - 1. Floor Tile: Furnish one box for every 50 boxes or fraction thereof, of each type, color, and pattern of floor tile installed.

1.5 QUALITY ASSURANCE

- A. Installer Qualifications: A qualified installer who employs workers for this Project who are competent in techniques required by manufacturer for floor tile installation indicated.

1.6 DELIVERY, STORAGE, AND HANDLING

- A. Store floor tile and installation materials in dry spaces protected from the weather, with ambient temperatures maintained within range recommended by manufacturer, but not less than 50 deg F or more than 90 deg F. Store floor tiles on flat surfaces.

1.7 FIELD CONDITIONS

- A. Maintain ambient temperatures within range recommended by manufacturer, but not less than 70 deg F or more than 95 deg F, in spaces to receive floor tile during the following time periods:
 - 1. 48 hours before installation.
 - 2. During installation.
 - 3. 48 hours after installation.
- B. After installation and until Substantial Completion, maintain ambient temperatures within range recommended by manufacturer, but not less than 55 deg F or more than 95 deg F.
- C. Close spaces to traffic during floor tile installation.
- D. Close spaces to traffic for 48 hours after floor tile installation.
- E. Install floor tile after other finishing operations, including painting, have been completed.

PART 2 - PRODUCTS

2.1 PERFORMANCE REQUIREMENTS

- A. Fire-Test-Response Characteristics: As determined by testing identical products according to ASTM E 648 or NFPA 253 by a qualified testing agency.

1. Critical Radiant Flux Classification: Class I, not less than 0.45 W/sq. cm.
- B. Sustainability Requirements: Resilient tile flooring shall comply with at least one of the following (Per 2016 California Green Building Standards Code, Section 5.504.4.6):
 1. Certified under the Resilient Floor Covering Institute (RFCI) FloorScore program.
 2. Compliant with the VOC-emission limits and testing requirements specified in the California Department of Public Health's 2010 Standard Method for the Testing and Evaluation Chambers, Version 1.1, February 2010.
 3. Compliant with the California Collaborative for High Performance Schools (CA-CHPS) Criteria Interpretation for EQ 2.2 dated July 2012 and listed in the CHPS High performance Product Database.
 4. Compliant with CDPH criteria as certified under the Greenguard Children's and Schools Program.

2.2 VINYL COMPOSITION FLOOR TILE

- A. Vinyl Composition Floor Tile: Subject to compliance with requirements, provide one of the following:
 1. Armstrong World Industries, Inc.; Standard Excelon Imperial Texture.
 2. Tarkett, Inc.; Azrock.
 3. Or approved equivalent.
- B. Properties:
 1. Tile Standard: ASTM F 1066, Class 2, through-pattern tile.
 2. Wearing Surface: Smooth.
 3. Thickness: 0.125 inch.
 4. Size: 12 by 12 inches.
 5. Colors and Patterns: As selected by Architect from full range of industry colors.

2.3 INSTALLATION MATERIALS

- A. Trowelable Leveling and Patching Compounds: Latex-modified, portland cement based or blended hydraulic-cement-based formulation provided or approved by manufacturer for applications indicated.
- B. Adhesives: Water-resistant type recommended by manufacturer to suit floor tile and substrate conditions indicated.
 1. Adhesives shall have a VOC content of not more than 50 g/L when calculated according to 40 CFR 59, Subpart D (EPA Method 24).
- C. Floor Polish: Provide protective liquid floor polish products as recommended by manufacturer.

PART 3 - EXECUTION

3.1 EXAMINATION

- A. Examine substrates, with Installer present, for compliance with requirements for maximum moisture content and other conditions affecting performance of the Work.
 - 1. Verify that finishes of substrates comply with tolerances and other requirements specified in other Sections and that substrates are free of cracks, ridges, depressions, scale, and foreign deposits that might interfere with adhesion of floor tile.
- B. Proceed with installation only after unsatisfactory conditions have been corrected.

3.2 PREPARATION

- A. Prepare substrates according to manufacturer's written instructions to ensure adhesion of resilient products.
- B. Concrete Substrates: Prepare according to ASTM F 710.
 - 1. Verify that substrates are dry and free of curing compounds, sealers, and hardeners.
 - a. Remove substrate coatings and other substances that are incompatible with adhesives and that contain soap, wax, oil, or silicone, using mechanical methods recommended by manufacturer. Do not use solvents.
 - b. Do not abrasively clean concrete substrates have been treated with a topical concrete vapor control barrier; comply with requirements of vapor control barrier manufacturer.
 - 2. Testing Concrete Substrates: Owner will engage a testing agency to perform tests for moisture vapor emission, humidity, and pH per Division 09 Section "Flooring Moisture and pH Testing." In the absence of Owner testing, perform the following tests:
 - a. Testing for pH: Perform tests recommended by floor tile manufacturer. Proceed with installation only after substrate pH falls within range on pH scale recommended by manufacturer in writing, but not less than 5 or more than 9.
 - b. Moisture Testing: Proceed with installation only after substrates pass testing according to floor tile manufacturer's written recommendations, but not less stringent than the following:
 - 1) Perform anhydrous calcium chloride test according to ASTM F 1869. Proceed with installation only after substrates have maximum moisture-vapor-emission rate of 3 lb of water/1000 sq. ft. in 24 hours.

- 2) Perform relative humidity test using in situ probes according to ASTM F 2170. Proceed with installation only after substrates have a maximum 75 percent relative humidity level.
3. Adhesion Testing: Perform tests recommended by floor tile manufacturer.
- C. Fill cracks, holes, and depressions in substrates with trowelable leveling and patching compound and remove bumps and ridges to produce a uniform and smooth substrate.
- D. Do not install floor tiles until they are same temperature as space where they are to be installed.
 1. Move resilient products and installation materials into spaces where they will be installed at least 48 hours in advance of installation.
- E. Sweep and vacuum clean substrates to be covered by resilient products immediately before installation.

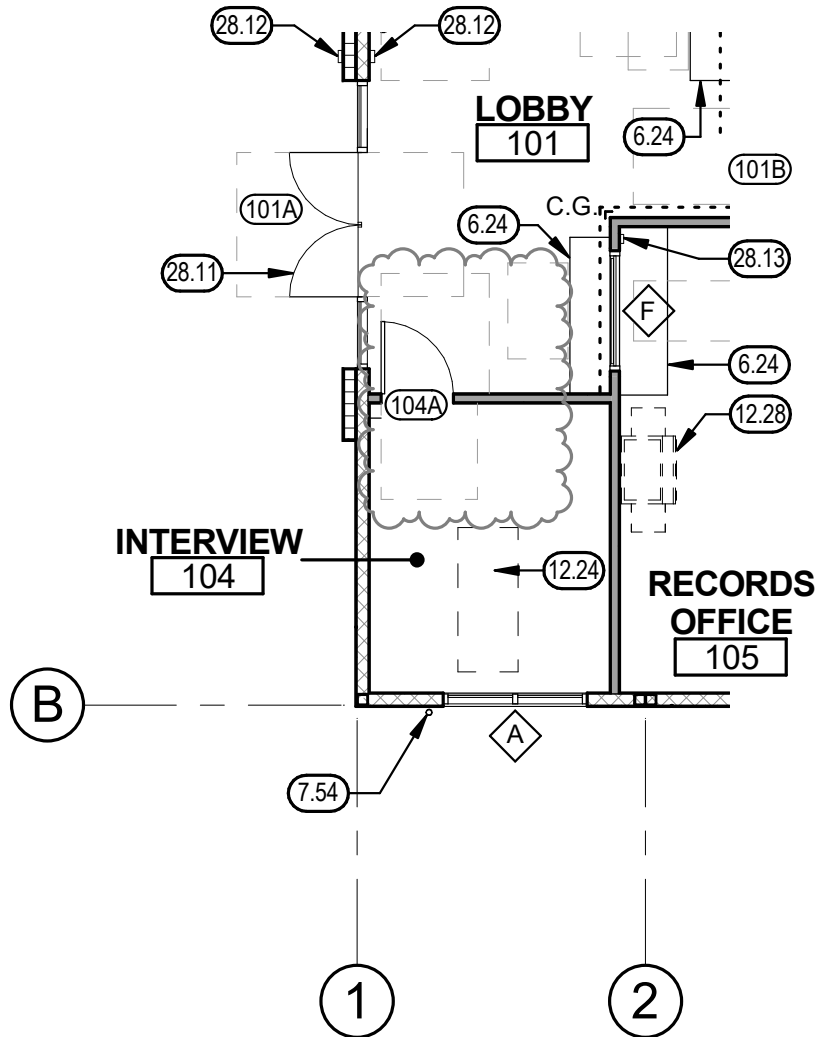
3.3 FLOOR TILE INSTALLATION

- A. Comply with manufacturer's written instructions for installing floor tile.
- B. Lay out floor tiles from center marks established with principal walls, discounting minor offsets, so tiles at opposite edges of room are of equal width. Adjust as necessary to avoid using cut widths that equal less than one-half tile at perimeter.
 1. Lay tiles square with room axis.
- C. Match floor tiles for color and pattern by selecting tiles from cartons in the same sequence as manufactured and packaged, if so numbered. Discard broken, cracked, chipped, or deformed tiles.
 1. Lay tiles with grain direction alternating in adjacent tiles (basket-weave pattern).
- D. Scribe, cut, and fit floor tiles to butt neatly and tightly to vertical surfaces and permanent fixtures including built-in furniture, cabinets, pipes, outlets, and door frames.
- E. Extend floor tiles into toe spaces, under accessible sink counters/cabinets, door reveals, closets, and similar openings. Extend floor tiles to center of door openings.
- F. Maintain reference markers, holes, and openings that are in place or marked for future cutting by repeating on floor tiles as marked on substrates. Use chalk or other nonpermanent, nonstaining marking device.
- G. Adhere floor tiles to flooring substrates using a full spread of adhesive applied to substrate to produce a completed installation without open cracks, voids, raising and puckering at joints, telegraphing of adhesive spreader marks, and other surface imperfections.

3.4 CLEANING AND PROTECTION

- A. Comply with manufacturer's written instructions for cleaning and protection of floor tile.
- B. Perform the following operations immediately after completing floor tile installation:
 - 1. Remove adhesive and other blemishes from exposed surfaces.
 - 2. Sweep and vacuum surfaces thoroughly.
 - 3. Damp-mop surfaces to remove marks and soil.
- C. Protect floor tile products from mars, marks, indentations, and other damage from construction operations and placement of equipment and fixtures during remainder of construction period.
- D. Floor Polish: Remove soil, adhesive, and blemishes from floor tile surfaces before applying liquid floor polish.
 - 1. Apply (2) two coats.
- E. Cover floor tile until Substantial Completion.

END OF SECTION



DOOR AT 104 - INTERVIEW

(REFERENCE SHEET M-A200)

(SCALE: 1/8" = 1' - 0")



TETER, LLP

7535 N. PALM AVE. 201
FRESNO, CA 93711 | 559.437.0887
125 S. BRIDGE ST. 150
VISALIA, CA 93291 | 559.625.5246
1200 DISCOVERY DR. 160
BAKERSFIELD, CA 93309 | 661.843.8400

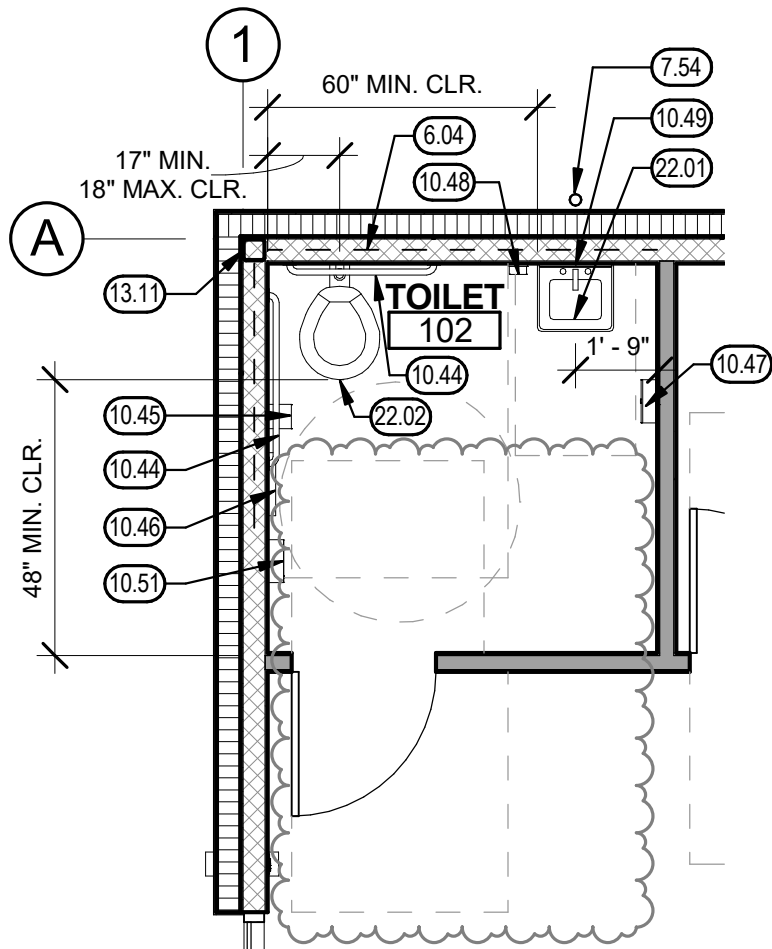
LEMOORE PD DISPATCH CITY OF LEMOORE

658 HILL ST.
LEMOORE, CA

JOB NUMBER:
17-10678

DWG. DATE:
02/15/19

AD2-A1



DOOR AT 102 - TOILET

(REFERENCE SHEET M-A200)

(SCALE: 1/4" = 1' - 0")



TETER, LLP

7535 N. PALM AVE. 201
FRESNO, CA 93711 | 559.437.0887
125 S. BRIDGE ST. 150
VISALIA, CA 93291 | 559.625.5246
1200 DISCOVERY DR. 160
BAKERSFIELD, CA 93309 | 661.843.8400

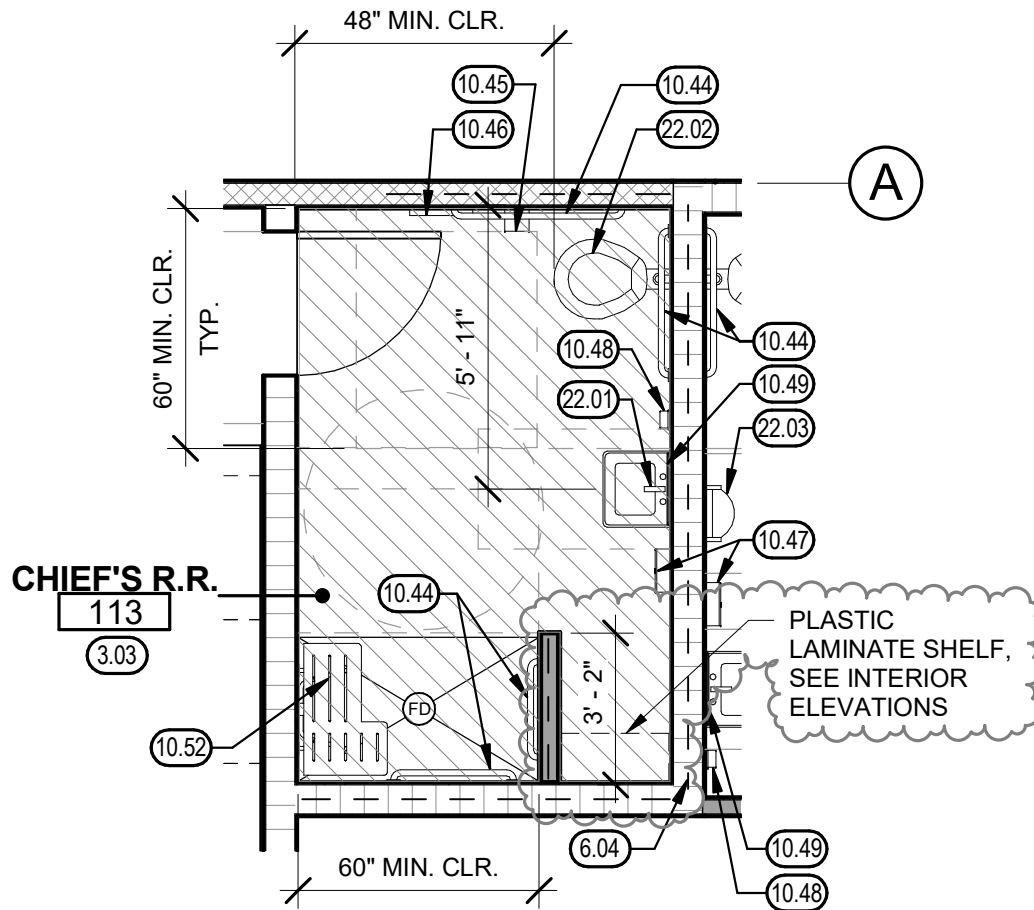
LEMOORE PD DISPATCH CITY OF LEMOORE

658 HILL ST.
LEMOORE, CA

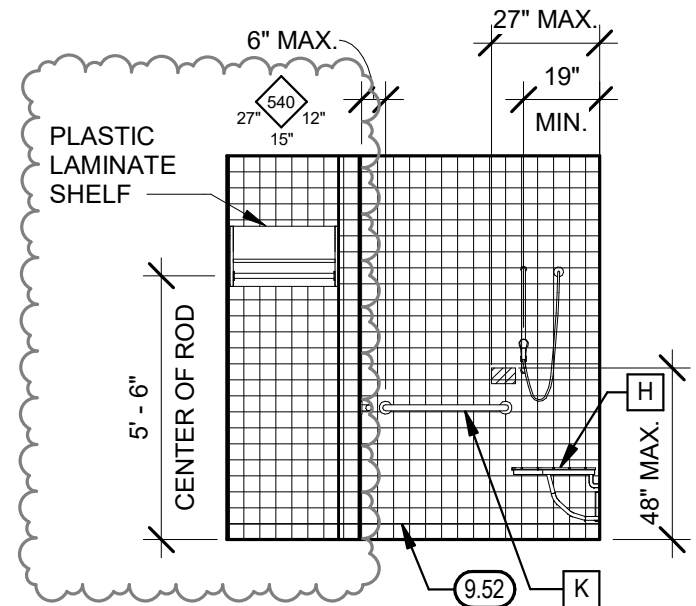
JOB NUMBER:
17-10678

DWG. DATE:
02/15/19

AD2-A2



FLOOR PLAN
 (REFERENCE SHEET M-A200)
 (SCALE: 1/4" = 1' - 0")



INTERIOR ELEVATION
 (REFERENCE SHEET M-A902, DETAIL 16, SOUTH)
 (SCALE: 1/4" = 1' - 0")

SHELF AT 113 - CHIEF'S R.R.



TETER, LLP

7535 N. PALM AVE. 201
 FRESNO, CA 93711 | 559.437.0887
 125 S. BRIDGE ST. 150
 VISALIA, CA 93291 | 559.625.5246
 1200 DISCOVERY DR. 160
 BAKERSFIELD, CA 93309 | 661.843.8400

LEMOORE PD DISPATCH
CITY OF LEMOORE

658 HILL ST.
 LEMOORE, CA

JOB NUMBER:
17-10678

DWG. DATE:
02/15/19

AD2-A3