

LEMOORE

CALIFORNIA

LEMOORE CITY COUNCIL  
COUNCIL CHAMBER  
429 C STREET  
December 8, 2021

**SPECIAL MEETING AGENDA**

***Please silence all electronic devices as a courtesy to those in attendance. Thank you.***

---

**5:30 pm SPECIAL SESSION**

- a. CALL TO ORDER
- b. INVOCATION
- c. PLEDGE OF ALLEGIANCE
- d. ROLL CALL

**PUBLIC HEARING – Section 1**

- 1-1 Public Hearing - Redrawing of the Election District Boundaries (Avalos)

**ADJOURNMENT**

**PUBLIC NOTIFICATION**

I, Marisa Avalos, City Clerk for the City of Lemoore, declare under penalty of perjury that I posted the above City Council Agenda for the Special meeting of December 8, 2021 at Council Chamber, 429 C Street and Cinnamon Municipal Complex, 711 W. Cinnamon Drive, Lemoore, CA on December 3, 2021.

                    //s//                      
Marisa Avalos, City Clerk

**CITY OF LEMOORE  
CITY COUNCIL SPECIAL MEETING  
DECEMBER 8, 2021 @ 5:30 p.m.**

Attendance and Public Comment Changes Due to COVID-19

The Lemoore City Council will be conducting its special meeting on December 8, 2021. Given the current Shelter-In-Place covering Kings County and the Social Distance Guidelines issued by Federal, State, and Local Authorities, the City is implementing the following changes for attendance and public comment.

All upcoming regular and special City Council meetings **will be open to fifteen (15) members of the public on a first come, first served basis and via Zoom.** The meeting may be viewed through the following options:

- Join Zoom Meeting
- Please click the link below to join the webinar:
- <https://us06web.zoom.us/j/88285778304?pwd=WkZMZC94UHM0WDJFZnJnTWFLbFVVFQT09>
- Meeting ID: 882 8577 8304
- Passcode: 786617
- Phone: +1 669 900 6833

The City will also provide links to streaming options on the City's website and on its Facebook page.

If you wish to make a general public comment or public comment on a particular item on the agenda, **participants may do so via Zoom during the meeting** or by **submitting public comments by e-mail to: [cityclerk@lemoore.com](mailto:cityclerk@lemoore.com)**. In the subject line of the e-mail, please state your name and the item you are commenting on. If you wish to submit a public comment on more than one agenda item, please send a separate e-mail for each item you are commenting on. Please be aware that written public comments, including your name, may become public information. Additional requirements for submitting public comments by e-mail are provided below.

General Public Comments & Comments on City Council Business Items

For general public comments and comments regarding specific City Council Business Items, public comments can be made via Zoom during the meeting or all public comments must be received by e-mail no later than 5:00 p.m. the day of the meeting. Comments received by this time will be read aloud by a staff member during the applicable agenda item, provided that such comments may be read within the normal three (3) minutes allotted to each speaker. Any portion of your comment extending past three (3) minutes may not be read aloud due to time restrictions. If a general public comment or comment on a business item is received after 5:00 p.m., efforts will be made to read your comment into the record. However, staff cannot guarantee that written comments received after 5:00 p.m. will be read. All written comments that are not read into the

record will be made part of the meeting minutes, provided that such comments are received prior to the end of the City Council meeting.

Public Hearings

For public comment on a public hearing, all public comments must be received by the close of the public hearing period. All comments received by the close of the public hearing period will be read aloud by a staff member during the applicable agenda item, provided that such comments may be read within the normal three (3) minutes allotted to each speaker. Any portion of your comment extending past three (3) minutes may not be read aloud due to time restrictions. If a comment on a public hearing item is received after the close of the public hearing, such comment will be made part of the meeting minutes, provided that such comment is received prior to the end of the meeting.

**\*PLEASE BE AWARE THAT ANY PUBLIC COMMENTS RECEIVED THAT DO NOT SPECIFY A PARTICULAR AGENDA ITEM WILL BE READ ALOUD DURING THE GENERAL PUBLIC COMMENT PORTION OF THE AGENDA.\***

The City thanks you for your cooperation in advance. Our community's health and safety is our highest priority.



711 West Cinnamon Drive • Lemoore, California 93245 • (559) 924-6744

## Staff Report

**Item No: 1-1**

**To: Lemoore City Council**

**From: Marisa Avalos, City Clerk**

**Date: November 29, 2021 Meeting Date: December 8, 2021**

**Subject: Redrawing the Election District Boundaries**

**Strategic Initiative:**

- |  |   |
|--|---|
| <input type="checkbox"/> Safe & Vibrant Community            | <input checked="" type="checkbox"/> Growing & Dynamic Economy |
| <input type="checkbox"/> Fiscally Sound Government           | <input checked="" type="checkbox"/> Operational Excellence    |
| <input type="checkbox"/> Community & Neighborhood Livability | <input type="checkbox"/> Not Applicable                       |

**Proposed Motion:**

It is recommended that the City Council: 1) receive a report from staff on the redistricting process and permissible criteria to be considered to redraw district boundaries; and 2) conduct a public hearing to receive public input on district boundaries.

**Subject/Discussion:**

Every ten years, cities with by-district election systems must use new census data to review and, if needed, redraw district lines to reflect how local populations have changed. This process, called redistricting, ensures all districts have nearly equal population. The redistricting process for the City of Lemoore must be completed by April 17, 2021.

The City adopted its current district boundaries on March 20, 2018 based on 2010 census data as required by law. The districts must now be redrawn using the 2020 census data and in compliance with the FAIR MAPS Act, which was adopted by the California legislature as AB 849 and took effect January 1, 2020.

Under the Act, the council shall draw and adopt boundaries using the following criteria in the listed order of priority (Elections Code 21601(c) for general law cities / 21621(c) for charter cities):

1. Comply with the federal requirements of equal population and the Voting Rights Act
2. Geographically contiguous

3. Undivided neighborhoods and “communities of interest” (socio-economic geographic areas that should be kept together)
4. Easily identifiable boundaries
5. Compact (do not bypass one group of people to get to a more distant group of people)
6. Shall not favor or discriminate against a political party

Once the prioritized criteria are met, other traditional districting principles can be considered, such as:

1. Minimize the number of voters delayed from voting in 2022 to 2024
2. Respect voters’ choices / continuity in office
3. Future population growth

By law, the City must hold at least four public hearings that enable community members to provide input on the drawing of district maps:

- At least one hearing must occur before the city or county draws draft maps
- At least two hearings must happen after the drawing of draft maps
- The fourth hearing can happen either before or after the drawing of draft maps
- City or county staff or consultants may hold a public workshop instead of one of the required public redistricting hearings

To increase the accessibility of these hearings, cities and counties must take the following steps:

- At least one hearing must occur on a Saturday, Sunday, or after 6 p.m. on a weekday
- If a redistricting hearing is consolidated with another local government meeting, the redistricting hearing portion must begin at a pre-designated time
- Local public redistricting hearings should be made accessible to people with disabilities

The purpose of this public hearing is to inform the public about the districting process and to hear from the community on what factors should be taken into consideration while creating district boundaries. The public is requested to provide input regarding communities of interest and other local factors that should be considered while drafting district maps. A *community of interest* under the relevant Elections Code for cities (Section 21601(c) / 21621(c)) is “a population that shares common social or economic interests that should be included within a single district for purposes of its effective and fair representation.”

Possible features defining community of interest might include, but are not limited to:

- A. School attendance areas;
- B. Natural dividing lines such as major roads, hills, or highways;
- C. Areas around parks and other neighborhood landmarks;
- D. Common issues, neighborhood activities, or legislative/election concerns; and
- E. Shared demographic characteristics, such as:
  - (1) Similar levels of income, education, or linguistic isolation;
  - (2) Languages spoken at home; and
  - (3) Single-family and multi-family housing unit areas.

On January 5, 2021, the City Council will conduct Public Hearing #2 to seek additional public input and provide direction on criteria to be considered while drafting district maps. Following that hearing, draft district maps and proposed election sequencing will be posted to the City website and available at City Hall.

**Financial Consideration(s):**

**Alternatives or Pros/Cons:**

**Commission/Board Recommendation:**

Not Applicable.

**Staff Recommendation:**

City staff recommends receiving input from the Community regarding the redrawing of election district boundaries.

**Attachments:**

- ☐ Resolution:
  - ☐ Ordinance:
  - ☐ Map
  - ☐ Contract
  - ☒ Other
- List: PowerPoint

**Review:**

- ☐ Asst. City Manager
- ☒ City Attorney
- ☒ City Clerk
- ☒ City Manager
- ☐ Finance

**Date:**

12/2/2021  
12/2/2021  
12/2/2021



# City of Lemoore

## Introduction to Redistricting

# Redistricting Process

---

Step	Description
<b>Census Data Releases</b>	<ul style="list-style-type: none"><li>• Census Bureau releases official 2020 Census population data – Aug. 12</li><li>• California’s official ‘prisoner-adjusted’ 2020 redistricting data – Sept. 20, 27</li></ul>
<b>Pre-Draft Map Hearing</b> December 8, 2021 -- 5:30 p.m.	<ul style="list-style-type: none"><li>• Held prior to release of draft maps</li><li>• Educate, solicit input on the communities in the Districts</li></ul>
<b>Pre-Draft Map Hearing</b> January 5, 2022 -- 5:30 p.m.	<ul style="list-style-type: none"><li>• Held prior to release of draft maps</li><li>• Educate, solicit input on the communities in the Districts</li></ul>
<b>Draft Map Hearing</b> March 2, 2022 -- 5:30 p.m.	<ul style="list-style-type: none"><li>• Discuss and revise the draft maps; discuss the election sequence</li><li>• Deadline to submit draft maps: February 16, 2022, 5 p.m.</li></ul>
<b>Draft Map Hearing</b> April 6, 2022 -- 6:15 p.m.	<ul style="list-style-type: none"><li>• Discuss and select final map; discuss and determine election sequence</li><li>• Deadline to submit draft maps: March 23, 2022, 5 p.m.</li><li>• Post draft maps by March 30, 2022, 5 p.m.</li></ul>



# Redistricting Rules and Goals

## 1. Federal Laws

- **Equal Population**
- **Federal Voting Rights Act**
- **No Racial Gerrymandering**



## 2. California Criteria for Cities

- 1. Geographically contiguous**
- 2. Undivided neighborhoods and “communities of interest”**  
(Socio-economic geographic areas that should be kept together)
- 3. Easily identifiable boundaries**
- 4. Compact**  
(Do not bypass one group of people to get to a more distant group of people)

## 3. Other Traditional Redistricting Principles

- **Minimize voters shifted to different election years**
- **Respect voters’ choices / continuity in office**
- **Future population growth**
- **Preserving the core of existing districts**

# 2020 Census

---



# Defining Neighborhoods

---

**1<sup>st</sup> Question: What is your neighborhood?**

**2<sup>nd</sup> Question: What are its geographic boundaries?**

**Examples of physical features defining a neighborhood boundary:**

- Natural neighborhood dividing lines, such as highway or major roads, rivers, canals and/or hills
- Areas around parks or schools
- Other neighborhood landmarks

**In the absence of public testimony, planning records and other similar documents may provide definition.**



# Beyond Neighborhoods: Defining Communities of Interest

---

## 1<sup>st</sup> Question: What defines your community?

- Geographic Area, plus
- Shared issue or characteristic
  - Shared social or economic interest
  - Impacted by city policies
- Tell us “your community’s story”

## 2<sup>nd</sup> Question: Would this community benefit from being “included within a single district for purposes of its effective and fair representation”?

- Or would it benefit more from having multiple representatives?

Definitions of Communities of Interest may not include relationships with political parties, incumbents, or political candidates.

# Possible Neighborhoods / Communities

# Public Mapping and Map Review Tools

---

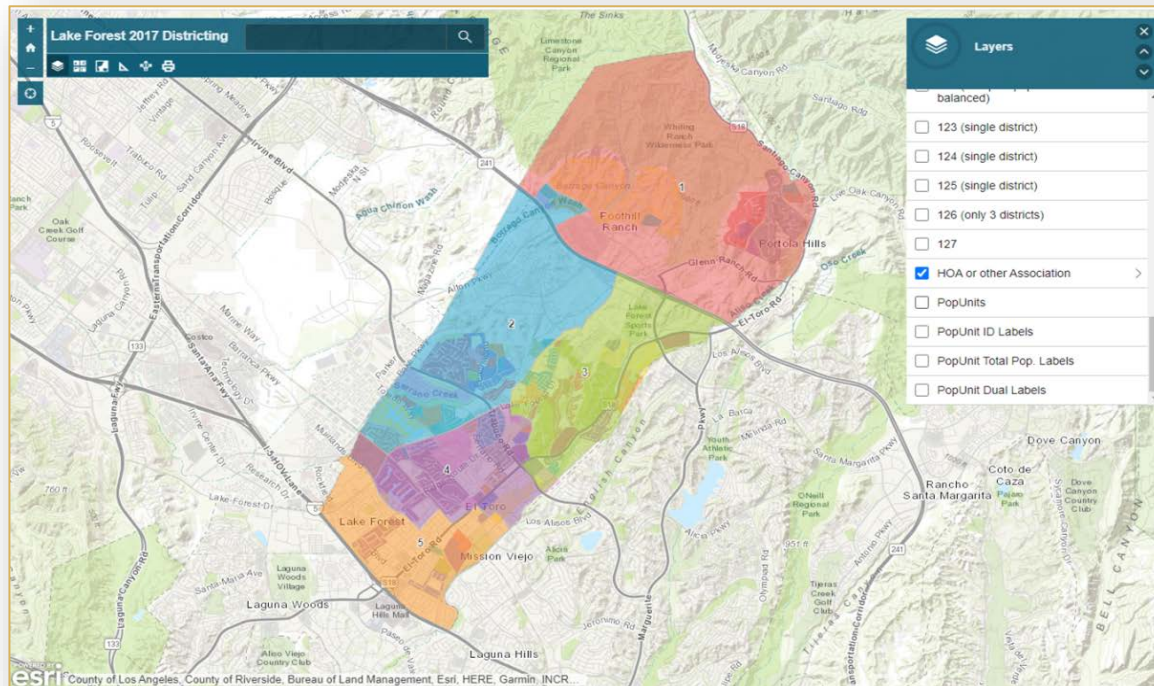
- Different tools for different purposes
- Different tools for different levels of technical skill and interest
  - Simple “review draft maps” tool
  - Easy-to-use “Draw your neighborhood” tool
  - Paper- and Excel-based simple “Draw a draft map” tools
  - **Dave’s Redistricting**: A simple online drawing tool
  - **Caliper’s Maptitude**: Powerful, data-rich “Draw a draft map” tool
  - **New Option**: Submit using your own software

Whether you use the powerful (but complicated) online mapping tool, Excel, the paper kit, or just draw on a napkin, ***we welcome your maps!***

# Simple Map Review Tool

## Online Interactive Review Map

- ESRI's "ArcGIS Online" – similar to Google Maps in ease of use
- Used to review, analyze and compare maps, not to create them
- Includes overlays of “community of interest” and other data



# Simple Map Drawing Tool

---

## Paper “Public Participation Kit”

- For those without internet access or who prefer paper
- Total Population Counts only – no demographic numbers
- Example: Lake Forest





## “Public Participation Kit”

- |    | A  | B                    | C      | D      | E      | F      | G      | H      | I      | J          | K                        | L           | M       | N       | O       | P       | Q       | R       | S          | T     | U    | V |  |  |  |  |
|----|--|----------------------|--------|--------|--------|--------|--------|--------|--------|------------|--------------------------|-------------|---------|---------|---------|---------|---------|---------|------------|-------|------|---|--|--|--|--|
| 1  | Sumas by District Assigned                             |                      |        |        |        |        |        |        |        |            | Ideal population: 15,314 |             |         |         |         |         |         |         |            |       |      |   |  |  |  |  |
| 2  | City of San Buenaventura 2017 Public Participation Kit |                      |        |        |        |        |        |        |        |            |                          |             |         |         |         |         |         |         |            |       |      |   |  |  |  |  |
| 3  | enter your name here                                   |                      |        |        |        |        |        |        |        |            |                          |             |         |         |         |         |         |         |            |       |      |   |  |  |  |  |
| 4  |  |                      |        |        |        |        |        |        |        |            |                          |             |         |         |         |         |         |         |            |       |      |   |  |  |  |  |
| 5  |  |                      |        |        |        |        |        |        |        |            |                          |             |         |         |         |         |         |         |            |       |      |   |  |  |  |  |
| 6  |  |                      |        |        |        |        |        |        |        |            |                          |             |         |         |         |         |         |         |            |       |      |   |  |  |  |  |
| 7  |  |                      |        |        |        |        |        |        |        |            |                          |             |         |         |         |         |         |         |            |       |      |   |  |  |  |  |
| 8  | Group  | Category             | Counts |        |        |        |        |        |        | Unassigned | Total                    | Percentages |         |         |         |         |         |         | Unassigned | Total |      |   |  |  |  |  |
| 9  |  | Test Pop.            | 1      | 2      | 3      | 4      | 5      | 6      | 7      | 107,197    | 107,197                  | 1           | 2       | 3       | 4       | 5       | 6       | 7       |            |       |      |   |  |  |  |  |
| 10 | Total Population                                       | Derations from Ideal | 15,314 | 15,314 | 15,314 | 15,314 | 15,314 | 15,314 | 15,314 | 0          | 100%                     | 100%        | 100%    | 100%    | 100%    | 100%    | 100%    | 100%    | 0%         | 0%    |      |   |  |  |  |  |
| 11 |  | Hisp                 | 0      | 0      | 0      | 0      | 0      | 0      | 0      | 34,182     | 34,182                   | #DIV/0!     | #DIV/0! | #DIV/0! | #DIV/0! | #DIV/0! | #DIV/0! | #DIV/0! | #DIV/0!    | 32%   | 32%  |   |  |  |  |  |
| 12 |  | NH White             | 0      | 0      | 0      | 0      | 0      | 0      | 0      | 64,294     | 64,294                   | #DIV/0!     | #DIV/0! | #DIV/0! | #DIV/0! | #DIV/0! | #DIV/0! | #DIV/0! | #DIV/0!    | 60%   | 60%  |   |  |  |  |  |
| 13 |  | NH Blk               | 0      | 0      | 0      | 0      | 0      | 0      | 0      | 1,919      | 1,919                    | #DIV/0!     | #DIV/0! | #DIV/0! | #DIV/0! | #DIV/0! | #DIV/0! | #DIV/0! | #DIV/0!    | 2%    | 2%   |   |  |  |  |  |
| 14 |  | NH oth               | 0      | 0      | 0      | 0      | 0      | 0      | 0      | 4,530      | 4,530                    | #DIV/0!     | #DIV/0! | #DIV/0! | #DIV/0! | #DIV/0! | #DIV/0! | #DIV/0! | #DIV/0!    | 4%    | 4%   |   |  |  |  |  |
| 15 |  | Total VAP            | 0      | 0      | 0      | 0      | 0      | 0      | 15,090 | 15,090     | #DIV/0!                  | #DIV/0!     | #DIV/0! | #DIV/0! | #DIV/0! | #DIV/0! | #DIV/0! | #DIV/0! | #DIV/0!    | 9%    | 9%   |   |  |  |  |  |
| 16 | Voting Age Population                                  | Hisp                 | 0      | 0      | 0      | 0      | 0      | 0      | 22,825 | 22,825     | #DIV/0!                  | #DIV/0!     | #DIV/0! | #DIV/0! | #DIV/0! | #DIV/0! | #DIV/0! | #DIV/0! | #DIV/0!    | 21%   | 28%  |   |  |  |  |  |
| 17 |  | NH White             | 0      | 0      | 0      | 0      | 0      | 0      | 33,637 | 33,637     | #DIV/0!                  | #DIV/0!     | #DIV/0! | #DIV/0! | #DIV/0! | #DIV/0! | #DIV/0! | #DIV/0! | #DIV/0!    | 50%   | 65%  |   |  |  |  |  |
| 18 |  | NH Blk               | 0      | 0      | 0      | 0      | 0      | 0      | 3,401  | 3,401      | #DIV/0!                  | #DIV/0!     | #DIV/0! | #DIV/0! | #DIV/0! | #DIV/0! | #DIV/0! | #DIV/0! | #DIV/0!    | 3%    | 4%   |   |  |  |  |  |
| 19 |  | NH oth               | 0      | 0      | 0      | 0      | 0      | 0      | 7,163  | 7,163      | #DIV/0!                  | #DIV/0!     | #DIV/0! | #DIV/0! | #DIV/0! | #DIV/0! | #DIV/0! | #DIV/0! | #DIV/0!    | 7%    | 9%   |   |  |  |  |  |
| 20 |  | Total CVAP           | 0      | 0      | 0      | 0      | 0      | 0      | 18,926 | 18,926     | #DIV/0!                  | #DIV/0!     | #DIV/0! | #DIV/0! | #DIV/0! | #DIV/0! | #DIV/0! | #DIV/0! | #DIV/0!    | 7%    | 9%   |   |  |  |  |  |
| 21 | Citizen Voting Age Population                          | Hisp                 | 0      | 0      | 0      | 0      | 0      | 0      | 32,543 | 32,543     | #DIV/0!                  | #DIV/0!     | #DIV/0! | #DIV/0! | #DIV/0! | #DIV/0! | #DIV/0! | #DIV/0! | #DIV/0!    | 49%   | 279% |   |  |  |  |  |
| 22 |  | NH White             | 0      | 0      | 0      | 0      | 0      | 0      | 1,675  | 1,675      | #DIV/0!                  | #DIV/0!     | #DIV/0! | #DIV/0! | #DIV/0! | #DIV/0! | #DIV/0! | #DIV/0! | #DIV/0!    | 2%    | 3%   |   |  |  |  |  |
| 23 |  | NH Blk               | 0      | 0      | 0      | 0      | 0      | 0      | 2,430  | 2,430      | #DIV/0!                  | #DIV/0!     | #DIV/0! | #DIV/0! | #DIV/0! | #DIV/0! | #DIV/0! | #DIV/0! | #DIV/0!    | 2%    | 14%  |   |  |  |  |  |
| 24 |  | NH oth               | 0      | 0      | 0      | 0      | 0      | 0      | 63,996 | 63,996     | #DIV/0!                  | #DIV/0!     | #DIV/0! | #DIV/0! | #DIV/0! | #DIV/0! | #DIV/0! | #DIV/0! | #DIV/0!    | 60%   | 358% |   |  |  |  |  |
| 25 |  | Total Reg            | 0      | 0      | 0      | 0      | 0      | 0      | 13,374 | 13,374     | #DIV/0!                  | #DIV/0!     | #DIV/0! | #DIV/0! | #DIV/0! | #DIV/0! | #DIV/0! | #DIV/0! | #DIV/0!    | 0%    | 0%   |   |  |  |  |  |
| 26 | Non-2014 Registration                                  | Latino               | 0      | 0      | 0      | 0      | 0      | 0      | 1,100  | 1,100      | #DIV/0!                  | #DIV/0!     | #DIV/0! | #DIV/0! | #DIV/0! | #DIV/0! | #DIV/0! | #DIV/0! | #DIV/0!    | 1%    | 0%   |   |  |  |  |  |
| 27 |  | Asian-Americans      | 0      | 0      | 0      | 0      | 0      | 0      | 463    | 463        | #DIV/0!                  | #DIV/0!     | #DIV/0! | #DIV/0! | #DIV/0! | #DIV/0! | #DIV/0! | #DIV/0! | #DIV/0!    | 0%    | 2%   |   |  |  |  |  |
| 28 |  | Hispanic             | 0      | 0      | 0      | 0      | 0      | 0      | 50,485 | 50,485     | #DIV/0!                  | #DIV/0!     | #DIV/0! | #DIV/0! | #DIV/0! | #DIV/0! | #DIV/0! | #DIV/0! | #DIV/0!    | 23%   | 233% |   |  |  |  |  |
| 29 |  | Total Voters         | 0      | 0      | 0      | 0      | 0      | 0      | 4,317  | 4,317      | #DIV/0!                  | #DIV/0!     | #DIV/0! | #DIV/0! | #DIV/0! | #DIV/0! | #DIV/0! | #DIV/0! | #DIV/0!    | 0%    | 0%   |   |  |  |  |  |
| 30 | Non-2014 Voters  | Latino               | 0      | 0      | 0      | 0      | 0      | 0      | 461    | 461        | #DIV/0                   |             |         |         |         |         |         |         |            |       |      |   |  |  |  |  |

# Dave's Redistricting

---

**“Draw Your Districts” focus**

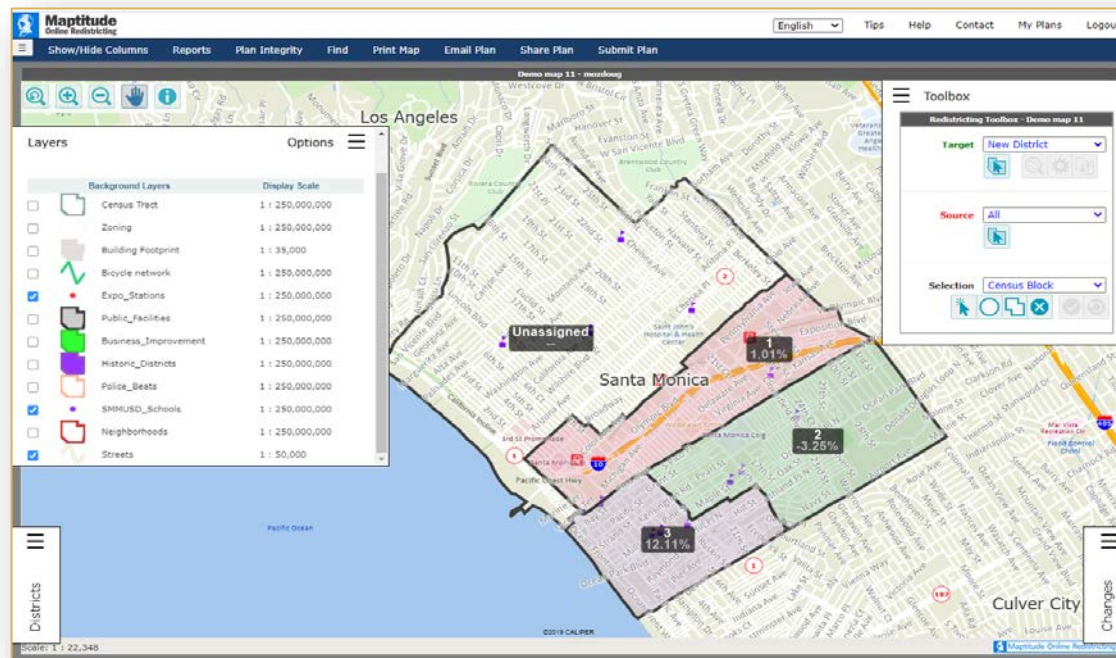
- **DavesRedistricting.org**



# Caliper's “Maptitude Online Redistricting”

## Full Database, Powerful Online Mapping Tool

- Powerful, common, data-rich online tool
- Six language options: English, Spanish, Portuguese, Vietnamese, Mandarin and Korean
- Example: Santa Monica



# Share Your Thoughts

---



# Public Hearing & Discussion

---

- ❑ What is your neighborhood and what are its boundaries?
- ❑ What other notable areas are in the City, and what are their boundaries?